

467.3.412

Vacuum cleaner motor performance

DOMEL®

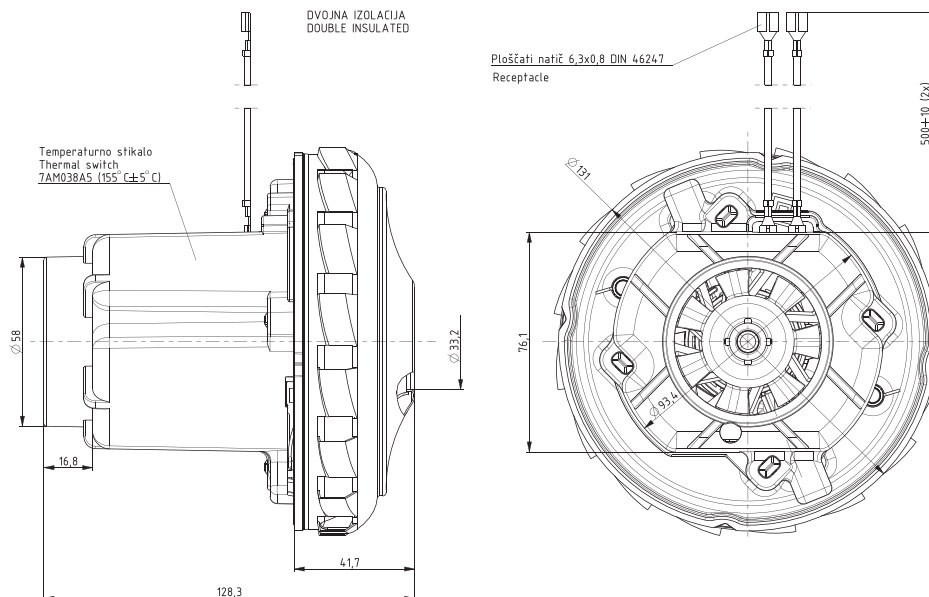
Vacuum cleaner motors with double insulation and high efficiency 467.3.412 / 1200W / 100V / 50Hz are used for wet and dry aspiration. Technical data and dimensions are given in the table. Vacuum motors consist of universal commutator motor and single fan stage. The rotor is supported with two ball bearings enabling vertical or horizontal installation of motor. The motor is designed for insulation class 180 (H) and constructed according to EN 60335-1.

Technical data:

Normal operation:	P_m	>=	1200	W
Vacuum:	P_{max}	>=	24,1 96,8	kPa in H ₂ O
Air Flow at $\phi 50$:	$Q_{\phi 50}$	>=	67 142	dm ³ /s CFM
Air Power:	P_{2max}	>=	455	W
Efficiency:	η_{max}	>=	38	%
Mass:	m	=	1,21	kg

Voltage:	100 V
Frequency:	50 Hz
Nominal Power:	1200 W

Max. power 1250W



Dimensional and performance data are subject to change without notice.

Orifice		Current	Input Power	Speed	Pressure		Air Flow		Air power	Efficiency
mm	in*	A	W	min ⁻¹	kPa	in H ₂ O	dm ³ /s	CFM	W	%
50	2	12,73	1254	31316	2,2	8,2	70,9	151,5	158	12,6
40	1 1/2	12,82	1262	31043	4,4	21,0	63,3	128,8	276	21,9
30	1 1/8	12,71	1252	31147	8,9	39,5	50,3	100,4	448	35,8
23	7/8	12,11	1195	32291	13,4	56,0	35,9	72,3	482	40,3
19	3/4	11,45	1132	33683	16,2	64,7	26,7	56,9	432	38,1
16	5/8	10,79	1069	35221	18,4	74,4	20,2	42,2	372	34,8
13	1/2	10,01	995	37148	20,8	84,2	14,1	28,7	293	29,4
10	3/8	9,26	923	39340	22,8	92,4	8,7	17,1	200	21,6
6	1/4	8,59	858	41514	24,1	97,0	3,8	8,0	93	10,8
0	0	8,04	805	43783	25,4	101,9	0,0	0,0	0	0,0

Data above represent the performance of an average motor sample. Individual data may vary due to normal manufacturing variations.

* Orifice in inch is only approximative.